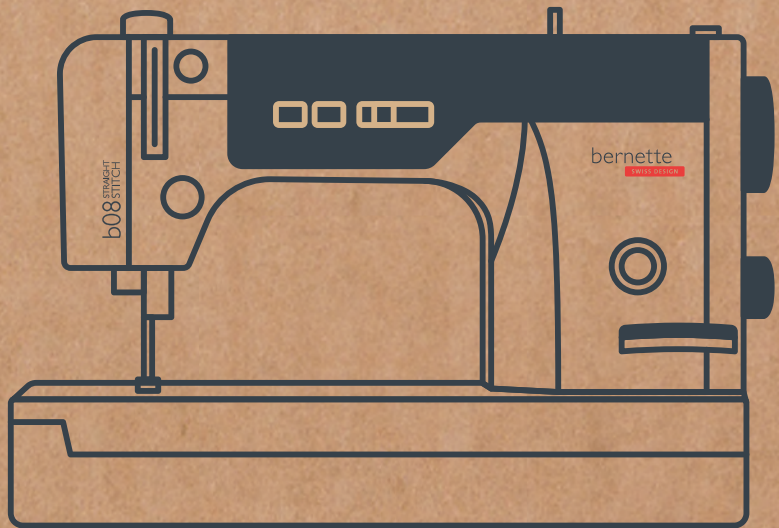


b08 STRAIGHT
STITCH



Quick Start Guide

bernette

SWISS DESIGN

Content

IMPORTANT SAFETY INSTRUCTIONS	3
General Information.....	5
Overview Machine Front	7
Overview Machine Front Controls	8
Overview Machine Side.....	9
Overview Machine Top	10
Overview Sewing Area	10
Connecting the Machine and Switching it On	11
Winding the Bobbin Thread	11
Threading the Bobbin Thread.....	12
Threading the Upper Thread	13
Pulling Up the Bobbin Thread.....	15
Changing the Presser Foot	15
Changing the Needle	15
Setting the Stitch Length.....	16
Cleaning the Hook and Feed Dog	16
Lubricating the Machine	16
Troubleshooting.....	17
Technical Data	19

IMPORTANT SAFETY INSTRUCTIONS

Please be aware of the following basic safety instructions when using your machine. Before using this machine, read instruction manual carefully.

DANGER

To protect against electric shock, the following instructions must be observed.

- Never leave the machine unattended when it is connected to the power supply.
- Immediately after use and before cleaning, switch off the machine and disconnect the power cable from the outlet.

In order to protect against injury, the following instructions must be adhered to.

- Do not look directly into the LED lamp with optical instruments (e. g. magnifying glass).
- If the LED lamp is damaged or defective, have the LED lamp checked or repaired at your local bernette dealer.
- Switch off the machine before working in the needle or hook area.

WARNING

To reduce the risk of burns, fire, electric shock or personal injury, the following instructions must be observed.

General Facts

- This machine may only be used for the purpose described in this Quick Start Guide.

Working Environment

- Do not use the machine outdoors.
- Only use the machine in dry rooms.
- Do not use the machine in a humid area.
- Do not use the machine in rooms where aerosol products (sprays) are being used.
- Do not use the machine in rooms where oxygen is dispensed.

Technical Condition

- Never use the machine when it is damp.
- Do not use the machine if it is not working properly.
- Do not use the machine if a cable or the plug is damaged.
- Do not use the machine if it has been dropped, damaged or has fallen into water.
- If the machine is damaged or does not work properly, have the machine checked or repaired by your local bernette dealer.
- Keep all ventilation openings of the machine and the foot control free of lint, dust and loose cloth. Do not use the machine if the ventilation openings are blocked.

Accessories and Supplies

- Only use the accessories recommended by the manufacturer.
- Always use an original stitch plate.
- The wrong stitch plate can cause needle breakage. Use only straight needles of good quality. Bent or damaged needles can cause needle breakage.
- This machine is double-insulated (except for USA, Canada and Japan). Use only identical replacement parts. See instructions for servicing of double-insulated products.

Appropriate Use

- The machine may be used, cleaned and maintained by children older than eight or by people with reduced physical, sensory or mental capabilities or if there is a lack of experience and knowledge. Furthermore, these persons must be supervised while working with the machine, or they must know the safe operation of the machine and be aware of resulting hazards.
- Children are not allowed to play with the machine. Special care should be taken when the machine is operated by or in the presence of children.
- Only use the machine with the supplied power cable. USA and Canada only: Do not connect power plug NEMA 1-15 to circuits exceeding 150 volt-to-ground.
- Only use this machine with the supplied foot control of type 21381.
- Do not insert any objects into the openings of the machine.

- Do not place any objects on the foot control.
- While sewing, guide the fabric gently.
- Pulling and pushing the fabric can cause needle breakage.
- For activities in the needle area – such as threading the needle, changing the needle, threading the looper or changing the presser foot – switch off the machine. To switch off, set the power switch to «0».
- When protective covers are removed, when the machine is oiled or when other cleaning and maintenance operations mentioned in this Quick Start Guide are carried out, switch off the machine and disconnect the power plug from the outlet.
- Pull the plug out of the outlet by pulling on the plug. Do not pull on the cable.
- The sound pressure level under normal conditions is less than 80 dB (A).

General Information

Availability of the Quick Start Guide

The Quick Start Guide is part of the machine.

Keep the Quick Start Guide of the machine in a suitable place near the machine and have it ready for reference.


A detailed instruction manual can be downloaded from www.bernette.com. When passing on the machine to a third party, enclose the Quick Start Guide of the machine.

Proper Use

Your machine is conceived and designed for private household use. It is intended for sewing fabrics and other materials as described in the instruction manual. Any other use is not considered proper. BERNINA assumes no liability for consequences resulting from improper use.

Servicing of Double-insulated Products

In a double-insulated product two systems of insulation are provided instead of grounding. No grounding means is provided on a double-insulated product nor should a means for grounded be added to the product. Servicing a double-insulated product requires extreme care and knowledge of the system and should only be done by qualified service personnel. Replacement parts for a double-insulated product must be identical to the original parts in the product. A double-insulated product is marked with the words: «Double-Insulation» or «double-insulated».

 The symbol may also be marked on the product.

Equipment and Scope of Delivery

Example images are used in these instructions for the purposes of illustration. The machines and the accessories shown in the images therefore do not always match the actual items included with your machine. The supplied accessory can vary depending on the country of delivery. Accessories mentioned or shown, which are not included in the scope of delivery, can be purchased as optional accessories from a bernette dealer.

Further accessories can be found at www.bernette.com.

For technical reasons and in order to improve the product, changes may be made to the equipment of the machine and the scope of delivery at any time and without prior notice.

Environmental Protection



BERNINA International AG is committed to environmental protection. We strive to minimize the environmental impact of our products by continuously improving product design and our manufacturing technology.

The machine is labeled with the symbol of the crossed-out wastebin. This means that the machine must not be disposed of with the household waste when the machine is no longer needed. Improper disposal can result in dangerous substances getting into the groundwater and thus into our food chain, damaging our health.

The machine must be returned free of charge to a nearby collection point for electrical waste and electronic equipment or to a collection point for the reuse of the machine. Information on collection points can be obtained from your local administration. When purchasing a new machine, the dealer is obliged to take back the old machine free of charge and dispose of it properly.

If the machine contains personal data, you are responsible for deleting the data yourself before returning the machine.

Overview Machine Front



- | | | | |
|----------|-------------------------------|----------|---------------------------------|
| 1 | Bobbin Cover | 6 | Thread Take-up Lever |
| 2 | Top Bobbin Cover | 7 | Thread Guide |
| 3 | Thread Cutter | 8 | Stitch Length Display |
| 4 | Thread Guide | 9 | Connection for Free Hand System |
| 5 | Presser Foot Pressure Display | | |

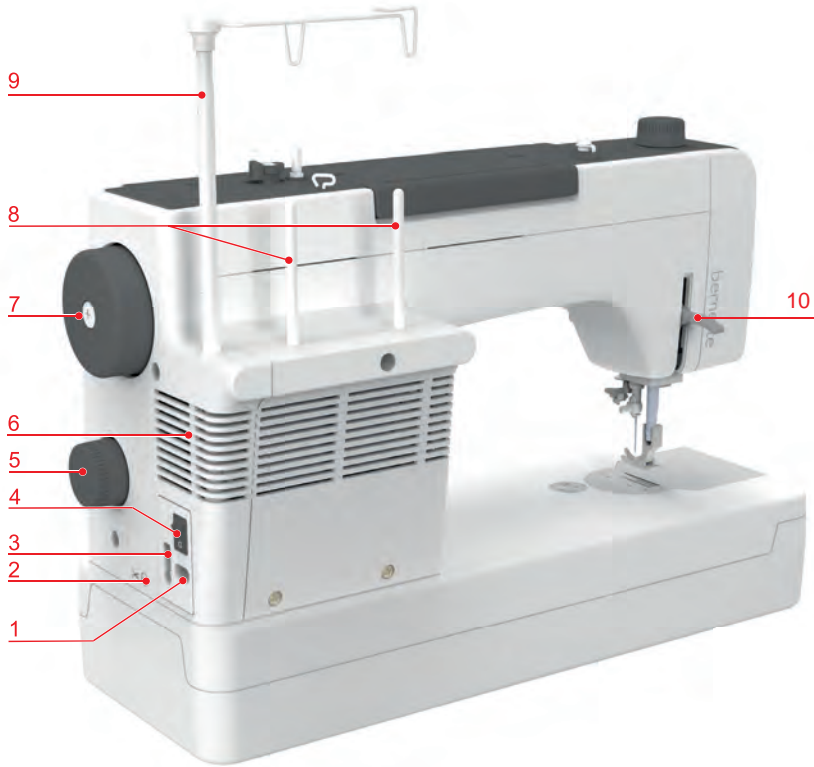
Overview Machine Front Controls



- 1** Thread Tension Dial
- 2** Thread Pretension Dial
- 3** Presser Foot Pressure Dial
- 4** Needle Up/Down Button

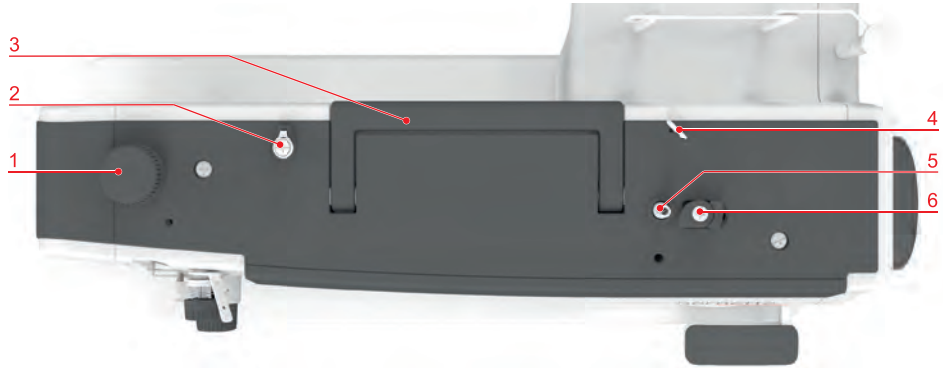
- 5** Bobbin Winder Button
- 6** Speed Control
- 7** Thread Cutter Button
- 8** Quick Reverse Lever

Overview Machine Side



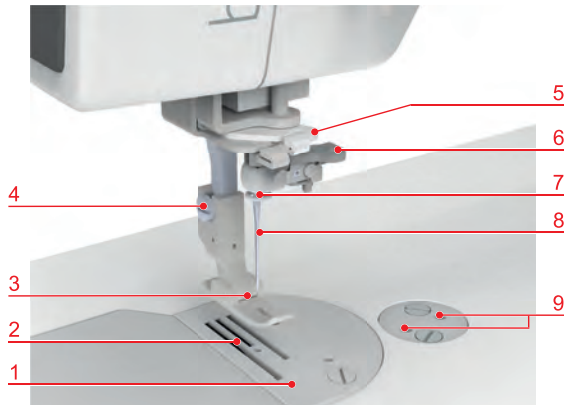
- | | | | |
|----------|---|-----------|--------------------------|
| 1 | Power Connection | 6 | Air Vents |
| 2 | Automatic Thread Cutter Connection (Optional) | 7 | Handwheel |
| 3 | Foot Control Connection | 8 | Spool Pin |
| 4 | Power Switch | 9 | Retractable Thread Guide |
| 5 | Stitch Length Adjustment Dial | 10 | Presser Foot Lifter |

Overview Machine Top



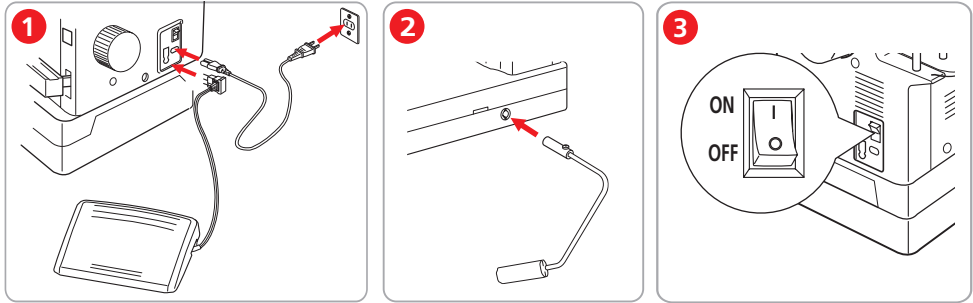
- | | | | |
|----------|----------------------------|----------|----------------------|
| 1 | Presser Foot Pressure Dial | 4 | Thread Guide |
| 2 | Bobbin Winder Pretension | 5 | Bobbin Winding Unit |
| 3 | Carry Handle | 6 | Stopper Winding Unit |

Overview Sewing Area

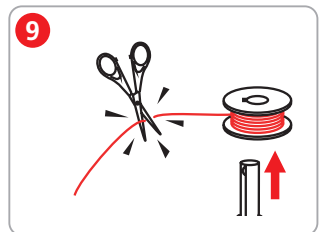
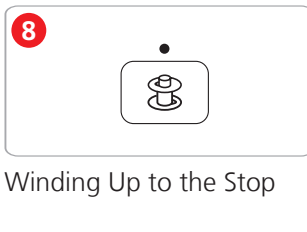
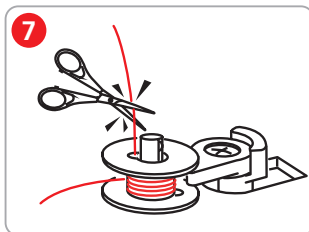
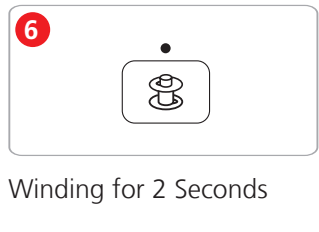
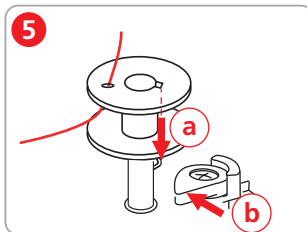
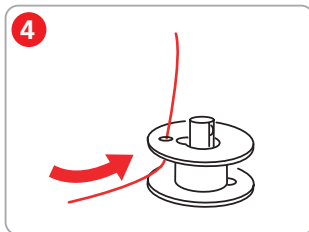
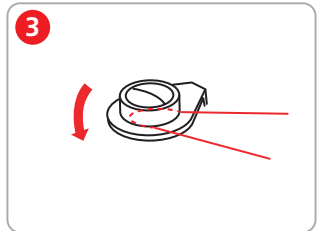
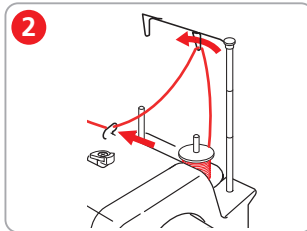
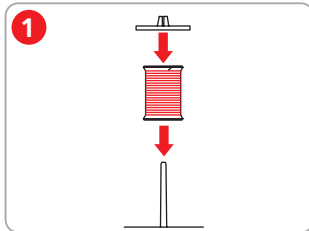
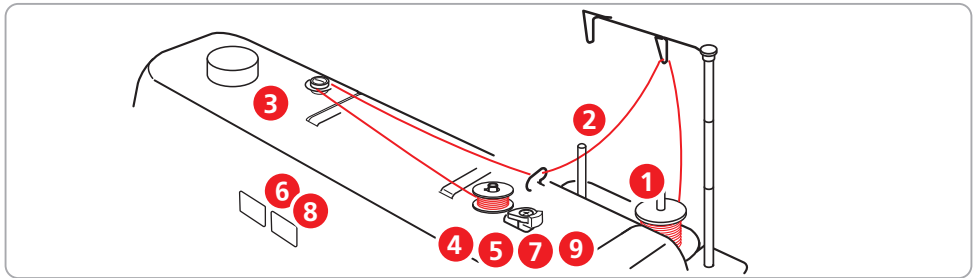


- | | | | |
|----------|-------------------------------|----------|-----------------------|
| 1 | Stitch Plate | 6 | Needle Threader |
| 2 | Feed Dog | 7 | Thread Guide |
| 3 | Presser Foot | 8 | Needle |
| 4 | Fixing Screw for Presser Foot | 9 | Holes for Attachments |
| 5 | Thread Guide | | |

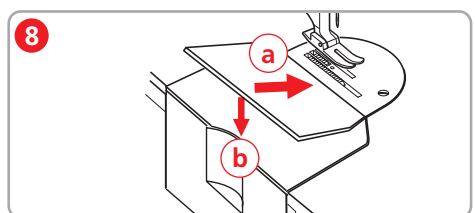
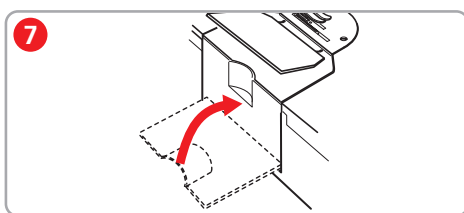
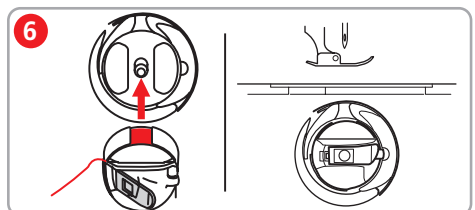
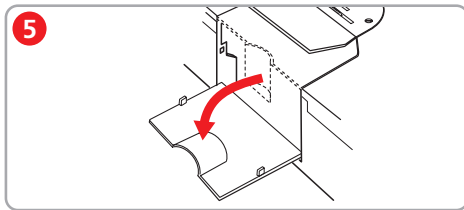
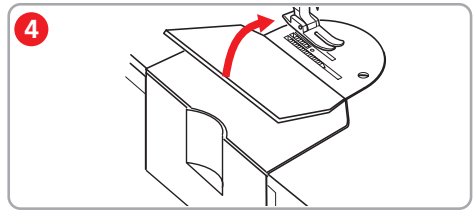
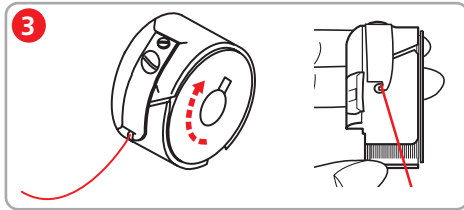
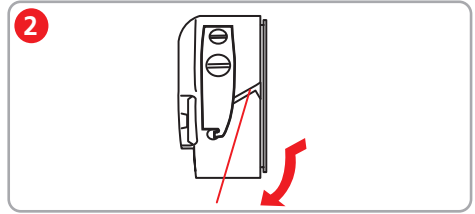
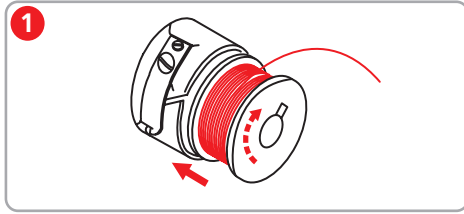
Connecting the Machine and Switching it On



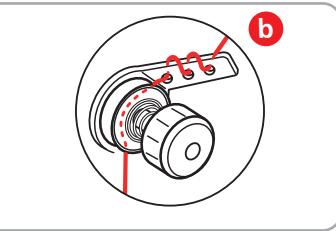
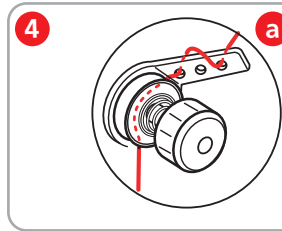
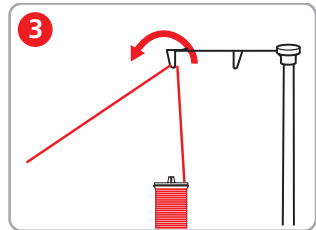
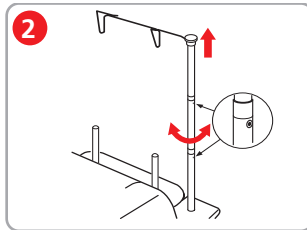
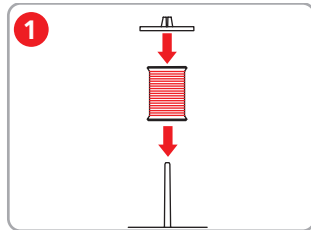
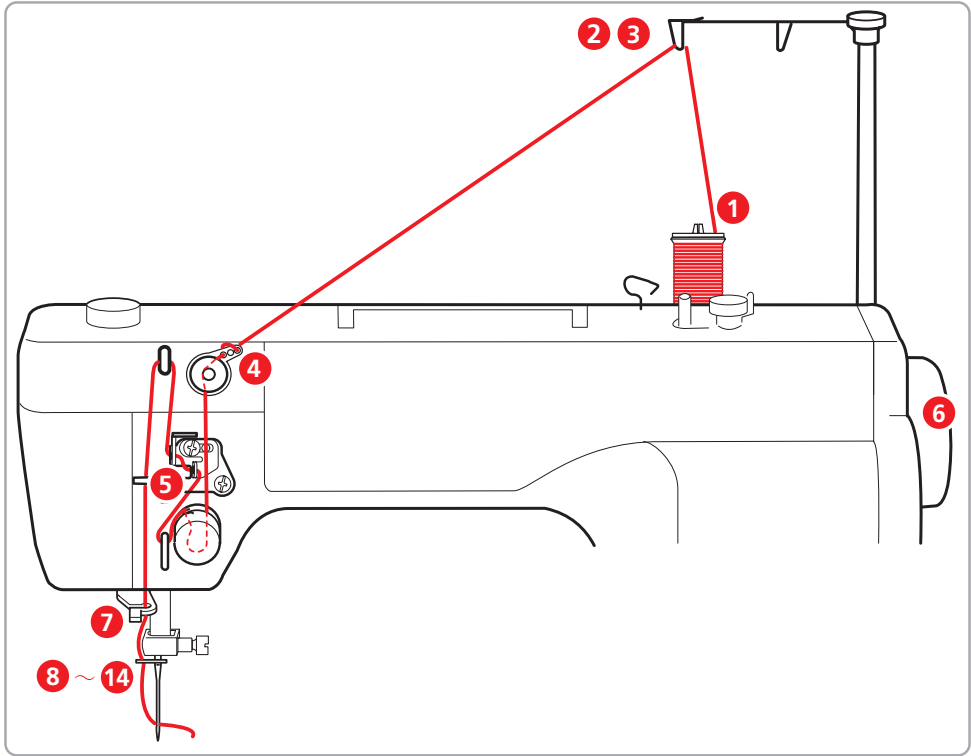
Winding the Bobbin Thread



Threading the Bobbin Thread

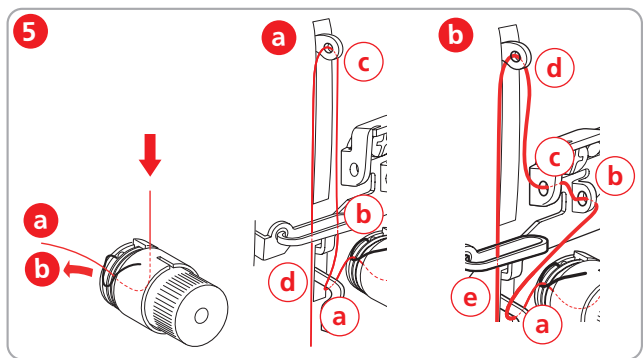


Threading the Upper Thread



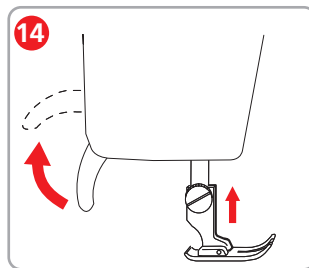
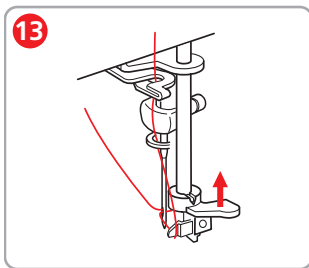
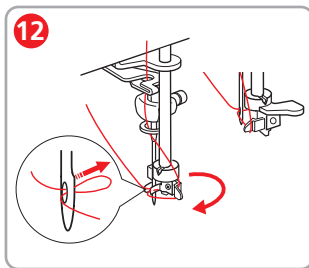
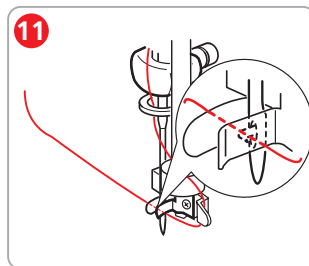
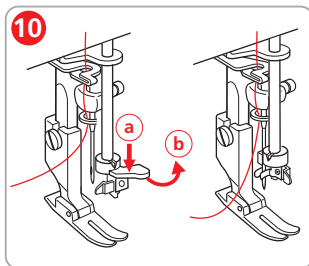
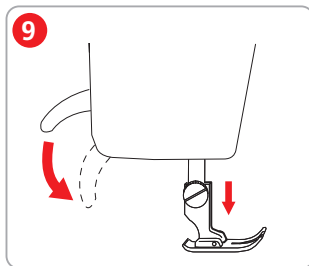
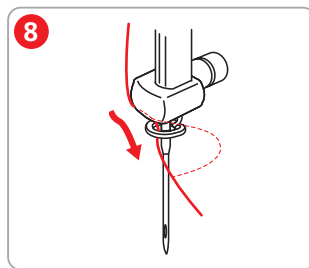
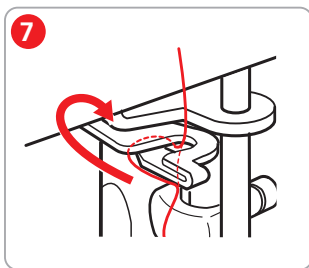
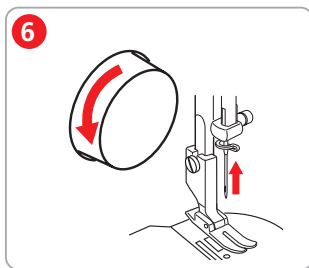
a) Standard Thread way.

b) Thread way for heavily twisted threads.

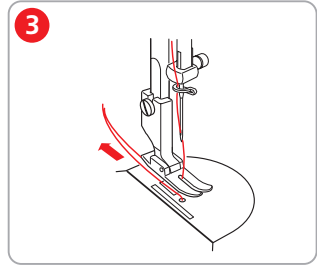
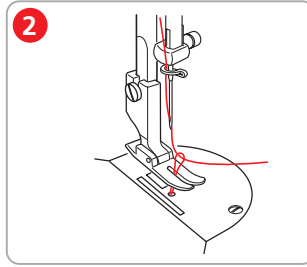
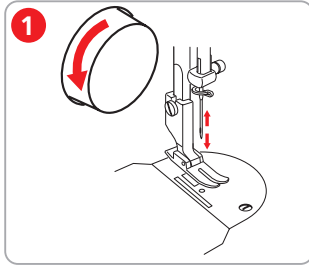


a) Threading path for fine and standard thread.

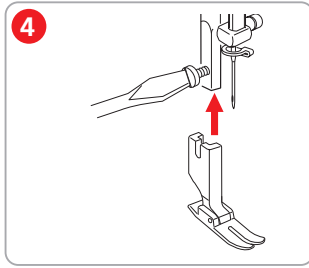
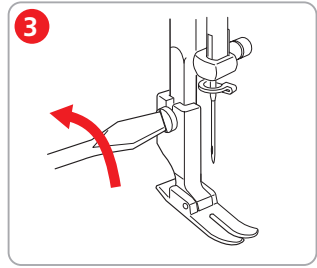
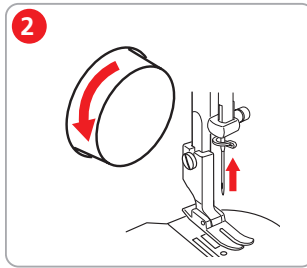
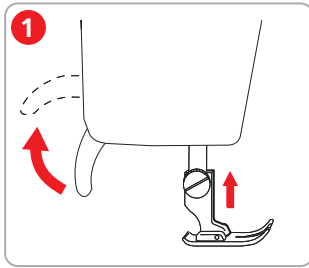
b) Threading path for thick thread.



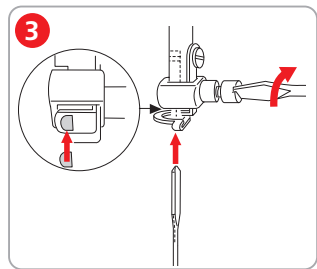
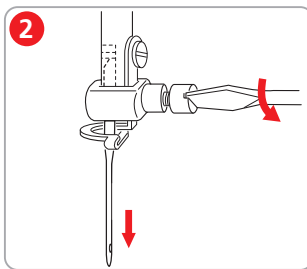
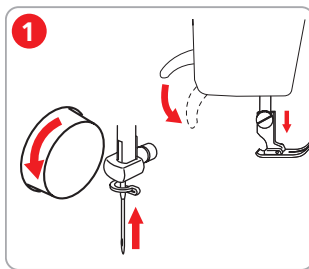
Pulling Up the Bobbin Thread



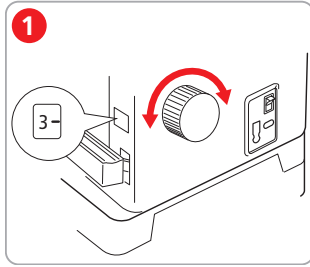
Changing the Presser Foot



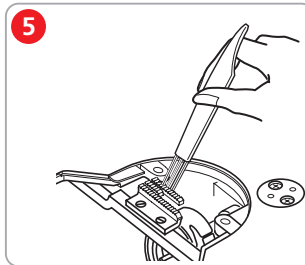
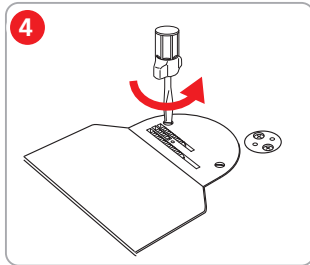
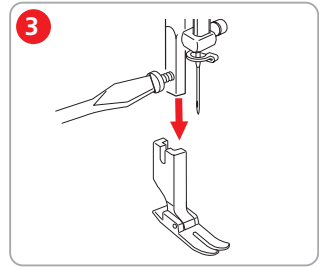
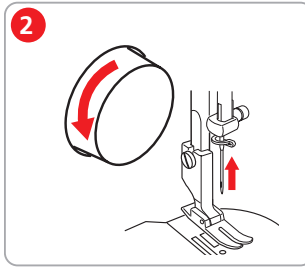
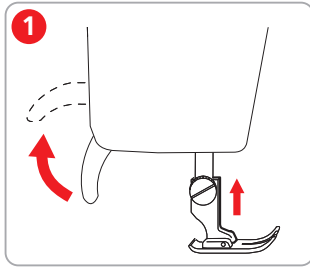
Changing the Needle



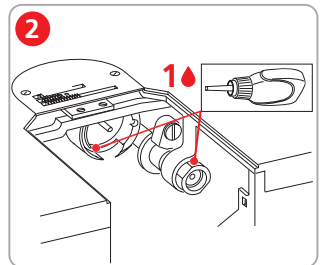
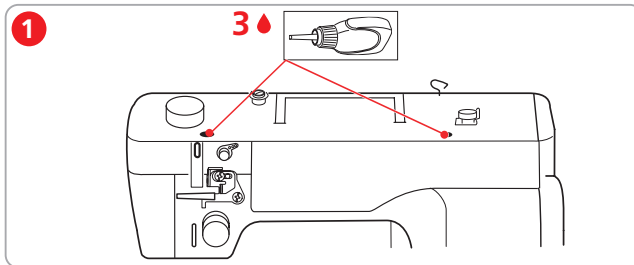
Setting the Stitch Length



Cleaning the Hook and Feed Dog



Lubricating the Machine



Troubleshooting

Uneven Stitch Formation

Upper thread too tight or too loose.	- Adjust the upper thread tension.
Needle blunt or bent.	- Replace the needle, make sure that a new needle is used.
Poor quality needle.	- Use a new needle.
Poor quality thread.	- Use quality thread.
Incorrect needle/thread combination.	- Match the needle with the thread size.
Incorrectly threaded.	- Rethread.
Fabric has been pulled.	- Feed the fabric evenly.
Dust or thread remnants under the tension spring of the bobbin case.	- Cleaning the bobbin case.

Skipped Stitches

Incorrect needle.	- Use needles from the HLx5 needle system.
Needle blunt or bent.	- Replace the needle.
Poor quality needle.	- Use a new needle.
The needle is incorrectly inserted.	- Insert the needle with the flat side to the right as far up as it will go and tighten the screw.
Incorrect needle point.	- Match the needle point to the texture of the material.

The Light of the Button «Needle Up/Down» doesn't Light Up

Lighting defective.	- Contact your bernette dealer.
---------------------	---------------------------------

The Light of the Button «Bobbin Winding Unit» doesn't Light Up

Lighting defective.	- Contact your bernette dealer.
---------------------	---------------------------------

Needle Breaks

The needle is incorrectly inserted.	- Insert the needle with the flat side to the right as far up as it will go and tighten the screw.
Fabric has been pulled.	- Feed the fabric evenly.
Thick fabric has been pushed.	- Use the appropriate presser foot for thick material, e.g. Leather Roller Foot. - Use the height compensation tool when sewing over a thick seam.
Knotted thread.	- Use quality thread.

Upper Thread Breaks

Incorrect needle/thread combination.	- Match the needle with the thread size.
Upper thread is too tight.	- Reduce the thread tension using the adjustment dial.
Incorrectly threaded.	- Rethread.
Poor quality thread.	- Use quality thread.
The stitch plate or the hook tip is damaged.	- Contact your bernette dealer to have the damages repaired. - Replace the stitch plate.

Lower Thread Breaks

The bobbin is not inserted correctly.	- Remove and reinsert the bobbin and pull up the thread. • The thread should run easily.
The bobbin is wound incorrectly.	- Check bobbin and thread correctly.
The stitch hole in the stitch plate is damaged.	- Contact your bernette dealer to have the damages repaired. - Replace the stitch plate.
Needle blunt or bent.	- Replace the needle.

Faulty Stitching

Thread remnants in the Thread Pre-tension.	- Cleaning the thread path: Fold a piece of thin material and slide the folded edge (not the raw edges) between the thread tension discs.
Incorrectly threaded.	- Rethread.
Thread is caught in the hook.	- Remove the upper thread and the bobbin case, turn the handwheel backwards and forwards and remove the thread remnants. - Cleaning the hook and feed dog area.
Incorrect needle/thread combination	- Check the needle/thread combination.

The Machine doesn't Start

The machine is not switched on.	- Switch the machine on.
The presser foot is raised.	- Lower the presser foot.
The machine is not connected to the power supply.	- Connect the power plug to the supply.
The machine is damaged.	- Contact your bernette dealer.
The foot control is not plugged.	- Plug in the foot control.

Technical Data

Designation	Value	Unit
Maximum Speed	1600	Stitches per Minute
Dimensions (W x D x H)	498 x 338 x 228	mm
Weight	14.5	kg
Input Voltage (Energy Consumption)	110 230	V V
Sound Pressure Level	< 80	dB (A)
Protective Class (Electrical Engineering)	II	



The detailed instruction manual and other explanatory videos can be found at www.bernette.com.

5600800.0.04 | 2024-03 EN
767453000
© BERNINA International AG
Steckborn CH, www.bernina.com



www.bernette.com/b08